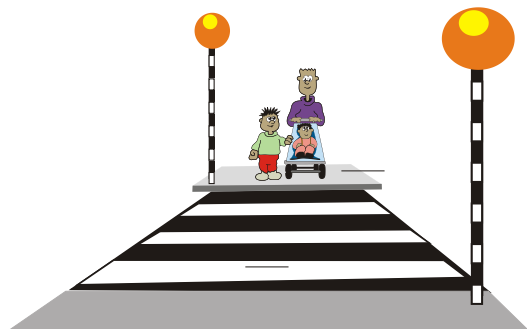


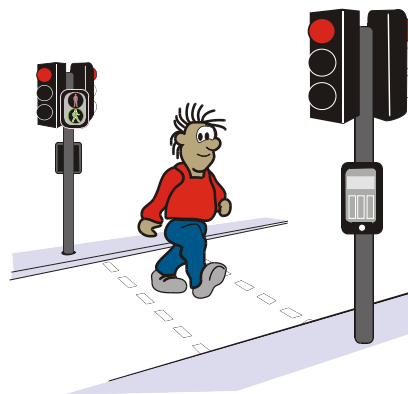
Name \_\_\_\_\_

# Safer Places to Cross



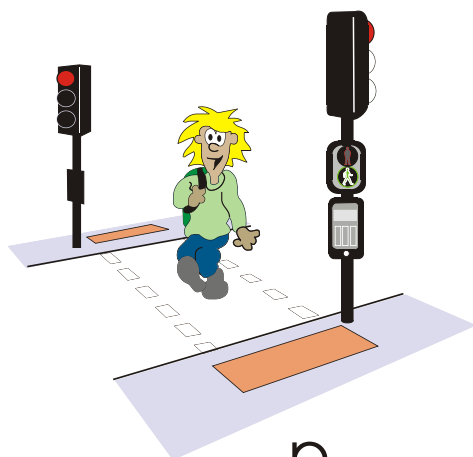
z \_ \_ \_ \_ \_ c \_ \_ \_ \_ \_

Write the name under each of the pictures of the safer places.



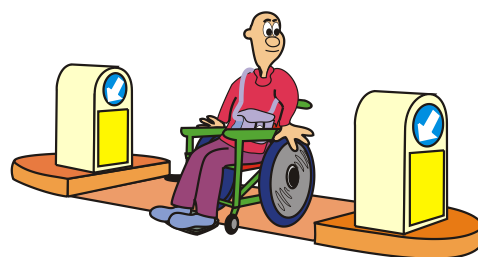
p \_ \_ \_ \_ \_

c \_ \_ \_ \_ \_



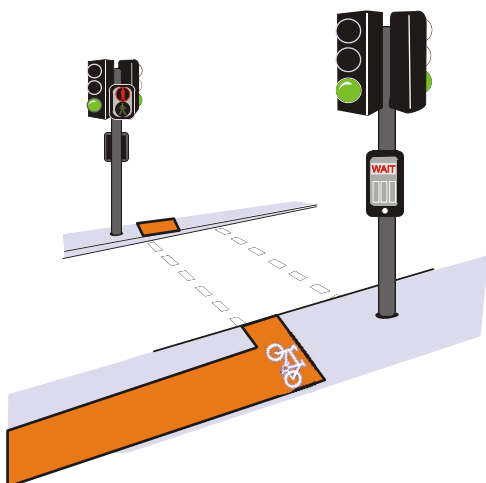
p \_ \_ \_ \_ \_

c \_ \_ \_ \_ \_



p \_ \_ \_ \_ \_

i \_ \_ \_ \_ \_



t \_ \_ \_ \_ \_

c \_ \_ \_ \_ \_

## REMEMBER!

The red and green men on a puffin crossing are next to the button you press to make the crossing work.

Name \_\_\_\_\_

## How Much Do You Know?

1. The safest place to walk on the pavement is next to the kerb.



True  
False

2. You need to press a button to make a Zebra Crossing work.



True  
False

3. The Green Cross Code is a set of rules that helps us to stay safe when we cross the road.

True  
False

4. At Pelican Crossings the flashing green man means "do not start crossing".



True  
False

## How Much Do You Know?

5. It is safe to stand by a car if you can hear the engine running.

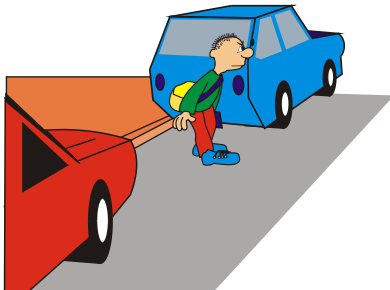
True

False

6. To cross safely between parked cars, you should stop at the kerb and at the outside edge of the cars.

True

False



7. The best way to cross the road at a junction is diagonally across the middle of the junction.

True

False

# SAFER JOURNEYS

## Learning Objectives

- To identify safe places to cross the road.
- To identify hazards in the local environment.
- To plan a safer route for regular journeys.

## Resources Required

Camera.

Coloured pens/pencils/crayons.

Paper, card or book for displaying photos.

## Activity

- Identify a journey that the trainee makes regularly e.g. to the shop or bus stop.
- Walk the route with the trainee taking photos of the journey (include return journey as well). Make sure that you include photos of crossing points and danger spots. Discuss ways of coping with the danger spots.
- Produce photos.
- Put the photos in order and discuss the journey with the trainee.
- Stick the photos in order on a sheet of card/paper, a wall display or in a book. Alternatively put the photos in order, punch a hole in the corner and tie together with string or similar.
- Trainees could put a red border around the photos of danger spots to remind them to take extra care at these places.



# Pedestrian Skills Progress Report

<b>Trainee's name</b>			
<b>Date / time of journey</b>			
<b>Route</b>			
<b>Trainer's name</b>			
<b>Task</b>	<b>Yes</b>	<b>No - needs further work</b>	<b>Comment</b>
<b>Pavement skills</b>			
Walks away from kerb			
Behaves appropriately			
<b>Crossing skills - general</b>			
Finds a safe place to cross			
Stops at the kerbside			
Waits for no traffic in both directions			
Crosses quickly without running			
Continues checking whilst crossing			
Uses refuge or island correctly (if available)			
<b>Crossing skills - zebra crossing</b>			
Waits for traffic to stop in both Directions			
Crosses quickly without running			
Continues checking whilst crossing			
<b>Crossing skills - Puffin, pelican etc</b>			
Stops at the kerbside			
Presses the button			
Waits for the green-man signal			
When green-man appears, checks traffic has stopped			
Crosses quickly without running			
Continues checking while crossing			
No crossing facility			