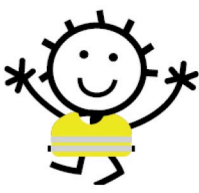


# Road Safety



It is important that your child is safe on the journey to school. You could help your child to be safe by:

- Purchasing a reflective tabard or accessory, such as an armband, badge or ruck sack cover
- Making sure you teach them the basics of road safety and making them aware of the Green Cross Code.
- Teaching them to be good and safe pedestrians and cyclists.
- Setting a good example by obeying traffic rules and always waiting until the road is clear before crossing.
- If your child is starting a new school make sure they know the safest route, practise the route with them and make sure they know what to do if something goes wrong (for example, if your child is starting secondary school and has never used a bus on their own, do they know what to do if they miss the bus?)
- Becoming a **Footsteps Tutor** to deliver pedestrian skills training to children.
- Use **Park and Stride** sites slightly further away from the school so as to reduce traffic and congestion right outside the school gates.

## Contact

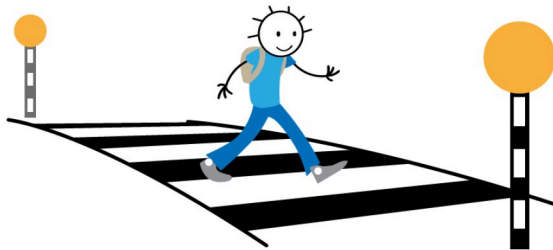
To find out more about School Travel Planning please either visit our website or email us (details below):

Website:

[www.schooltravelplanning.com](http://www.schooltravelplanning.com)

Email:

[schooltravelplanning@buckinghamshire.gov.uk](mailto:schooltravelplanning@buckinghamshire.gov.uk)



## School Travel Planning

### Information for Parents



[schooltravelplanning@buckinghamshire.gov.uk](mailto:schooltravelplanning@buckinghamshire.gov.uk)

# The School Journey

The aim of this leaflet is to encourage you to think about how you travel to school. Many school run journeys are unnecessarily made by car and could be made using other modes of travel.

Buckinghamshire Council's Transport Strategy team works with schools to help them develop a travel plan. This promotes and encourages active, safe and sustainable travel for the school journey, helping to reduce congestion, making people more active and helping the environment.

Schools work with pupils, parents, staff and residents to develop a travel plan that meets the needs of the whole school community. They identify issues, come up with solutions and implement initiatives and campaigns to alleviate problems and improve congestion, health and the environment.

## Initiatives

To encourage parents and pupils to think about how they travel, and to promote road safety, schools can organise a wide range of initiatives which parents can get involved with and help to run

**Footsteps**—road safety training for young children (Year 1 to 3). *You could train to be a Tutor.*



**Bikeability**—Bikeability is cycling proficiency for the 21st century. There are three Bikeability levels and children will be encouraged and inspired to achieve all three levels.

**Scooter Skills**—teaching children how to scoot safely and considerately. *You could help to run a course as a PE lesson, lunch time or after-school club.*

**Junior Road Safety Officers**—helping Year 5 and 6 pupils to become the 'champions' for road safety and sustainable travel. *You could be their 'Helper', encouraging them to run campaigns and competitions.*

**Newsletters**—to promote what the school is trying to do and provide information about initiatives, campaigns and competitions. *You could help to produce the newsletter and distribute it to families and residents.*

**School Travel Plan working group**—responsible for developing and implementing the plan. *You can help to make decisions about what is included in the plan and put forward ideas to reduce car use and congestion*

## Perfect Parking

**Parking safely and considerately around the school helps cut congestion and keeps children safe at the beginning and end of the school day.**

Whilst our main aim is to



reduce car use for the school journey, we do understand that some families need to drive. So we encourage safe and considerate parking near the school.



The Highway code states :

- Do not park near a school entrance
- Do not park in front of an entrance of a property
- Do not park anywhere you would prevent access for Emergency Services
- Do not park opposite or within 10 metres (32 feet) of a junction, except in an authorised parking space
- You must not wait or park on the school entrance marking.

So if you need to bring your car to school please remember to think about where you park and try and keep the school gate area safe for our pupils!

You could help your child's school to address unsafe and inconsiderate parking by organising a **Perfect Parking Campaign**. You can help to:

- Display **Safe Parking Banners**
- Organise a **Parent Parking Promise**
- Recruit **Pupil Traffic Wardens**
- Ask the school to run a **Park Away Day**
- Identify **Park and Stride** sites
- Display signs and posters on school fences